



NEW CONNOR QUICKLOCK FUSION PORTABLE FLOOR SYSTEM

Mammoth Sports and Entertainment LLC
155 N. Main St.
Elmira, NY 14901

August 9, 2022

Project Name: First Arena Portable Basketball Floor
Primary Contact: Steve Donner Phone: (585) 414-9271
Delivery Date: December 2022

Floor Price: \$147,927.00
Storage Carts: \$9,000.00
Heavy Duty Ramp: \$800.00
Shipping Estimate: \$7,102.00 ****Subject to change due to gas/freight pricing volatility****
Total: \$164,829.00 (One hundred sixty-four thousand eight hundred twenty-nine dollars and 00/100)
PRICE IS GOOD FOR 15 DAYS FROM DATE ABOVE

Price Includes:

Floor Size: 60' x 112' (6,720 SF) 25/32" x 2 1/4" 2nd and Better Grade MFMA Maple QuickLock Fusion Portable System manufactured by Connor Sports.

Sanded and finished with standard graphics (Painted border, keys, center circle logo, baseline lettering) Any staining, tinting, multi-colored logos, will be subject to upcharge.

(15) Storage Carts

(1) Heavy Duty ADA Ramp

Shipping to Elmira, NY

Delivery and Unloading: Facility is responsible for providing a fork-lift for unloading the floor from delivery truck upon arrival and placing floor in area where it will be assembled.

Connor Sports will provide a technical supervisor for initial installation. Facility will be responsible to provide a minimum (8) laborers for initial installation.

Warranty: Standard (1) year warranty on parts and materials.

Submittals: Approval drawings shall be submitted for approval prior to final application of lines and graphics. Drawings to be completed within 21 days upon receipt of signed proposal and receipt of any required down payment.

Available Options:

Transitions = \$55 per lineal foot plus shipping
Resilient Pad Upgrade = \$1.75 per square foot

Exclusions, clarifications and indemnification: *Price DOES NOT include applicable sales tax.* Unless otherwise agreed in writing, payment in full of all sums due shall be made to Connor Sports immediately upon substantial completion or delivery of the agreed services/training, materials and/or work covered herein. If payment is not received, Connor Sports will repossess portable court with shipping at the expense of Customer. Customer accepts absolute, sole and unconditional responsibility for proper assembly, disassembly and storage of all flooring as well as the location at/in, and reassembly of, any portion/part of the flooring in any facility(ies). Customer agrees (upon each reassembly) to take all/any necessary precautions to ensure the safety of any person(s) walking/running/traversing/moving or being transported (e.g., by wheel chair or otherwise) on or around the reassembled floor. Customer hereby agrees to indemnify and hold Connor Sports harmless from any and all liability arising from or incident to Customer's intentional, reckless and/or negligent failure/omission to ensure the safety of any person(s) while he/she is walking/running/traversing/moving or being transported (e.g., by wheel chair or otherwise) on or around any portion/part of the flooring that has been reassembled by Customer at any facility(ies).

STORAGE OF COURT:

- Care shall be taken by owner upon delivery of floor system to prevent any possible contact with moisture.
- System shall be stored indoors upon delivery in a dry protected area with environmental conditions (temperature and humidity) compatible to conditions in assembly area.
- Floor system shall not be assembled while subjected to possible moisture conditions including masonry, plaster, tile, marble and terrazzo work or any overhead trades, including mechanical, athletic equipment, lighting or sound.
- Permanent heat, light and ventilation shall be completely installed and operating at least two weeks prior, during, and continuously after delivery and/or installation. Indoor temperature range of 55-degrees to 75-degrees and relative humidity between 35 – 50% shall be maintained. This 15% range of humidity provides minimal flooring shrinkage and growth. Larger fluctuations in relative humidity will cause excessive wood floor shrinkage or expansion. Failure to comply with storage requirements will void warranty claim for any damage to panels.

SUBSTRATE CONDITIONS:

- Concrete Substrate - The general contractor shall provide a broom clean concrete subfloor to a flatness tolerance of 1/8" in any 10' radius. The concrete shall be dry according to in-situ probe test, compliant with the most recent version of ASTM F2170, relative humidity level not to exceed 85%. Any deviation from the above stated limits concerning flatness or dryness shall be corrected by the customer at the sole expense of the customer.
- Flooring Substrate - Permanent flooring (tile, wood, synthetic flooring, etc.) shall provide a sound-supporting base for the QuickLock system, and provide a flatness tolerance of 1/8" in any 10' radius. If necessary, a protective cover shall be provided by the facility owner to prevent marring of the support floor.
- Ice Rink Substrate - Ice covering panels must provide a sound surface capable of supporting the QuickLock system without indentation of the covering panels. All ice cover panels shall be abutted tight at end and side joints, and provide an overall flatness of 1/8" in any 10' radius.

WATER BASED FINISH:

- The use of water based seal and finish products has sometimes resulted in the occurrence of panelization (localized excessive cracks developing between some strip flooring boards while adjacent boards remain tightly bonded together with no apparent separations) and in extreme cases, raised panel edges during periods of exceptional low relative humidity, especially in areas of the country that experience significant swings in seasonal humidity conditions. The customer accepts full responsibility of any issues arising from the use of water-based seal and finish products should they occur.

COURT MOVEMENT:

- Portable courts are manufactured to be assembled and disassembled. Owner may notice some gaping between panels if court is left down for an extended period of time. To alleviate gaps, court may require assembly and dis-assembly periodically to alleviate panel separation. Break down and set-up would be the sole responsibility of owner.

ACCEPTANCE – This proposal, when accepted and signed by you and delivered back to Connor Sports shall constitute a contract between us, it being understood that it covers all agreements between us and that no agent, salesman, representative, or officer of either of us has made any statement or agreement, oral or written, modifying adding to or changing the terms and conditions set forth herein. Unless this proposal is accepted by you (and approved by us), it is subject to withdrawal or change without notice. This order is taken subject to strikes, fires, or other contingencies beyond our control. If, after the date hereof, you or your agent, servant, representative or

employee shall order or request Connor Sports to furnish or perform any additional services or materials not included above, and such order or request is not in writing and properly signed by you or your agent(s), Connor Sports may within a reasonable time confirm to you such order or request, including the price of the services and materials, and unless you object to the confirmation to you in writing and your objection is delivered to Connor Sports within ten (10) days of receipt of the confirmation you agree that such confirmation by Connor Sports will be in addition to this proposal. The undersigned accepting party (you) hereby accepts and agrees to all of the terms and provisions stated above.

Accepted by _____
(Please type or print name and title) Customer

Date _____

Signature _____

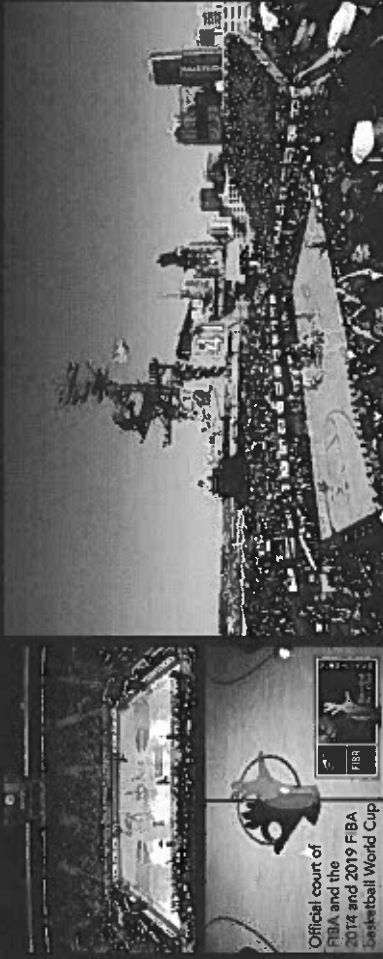
Please sign and send proposal to:

Connor Sports
ATTN: Gary Gray
ggray@connorsports.com

Where Champions Play

UNION SPON
Where Champions Play

THE WORLD LEADER IN PORTABLE SPORTS FLOORING



Official court of
FIBA and the
2014 and 2019 FIBA
Basketball World Cup

NCAA

Official court of the
NCAA® Men's and
Women's Final Four® and
the NCAA® Men's and
Women's Division I
Tournaments.



Customer Service:
1.800.283.9533
info@comsports.com
comsports.com

Gerflor
a commercial of



QUICKLOCK™

CONNOR QUICKLOCK™ THE PORTABLE SYSTEM THAT PLAYS LIKE A PERMANENT FLOOR

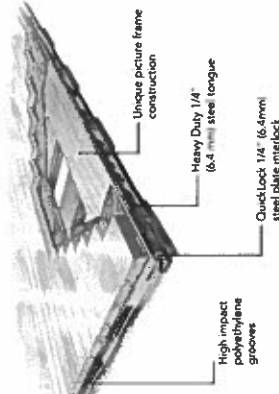
QuickLock portable floor systems provide easy alignment and quick assembly and are perfect for multi-purpose arenas that house everything from hoops to hockey. QuickLock is the official floor of the NCAA® Final Four® basketball tournaments.



QUICKLOCK™ PORTABLE SYSTEM'S UNIQUE FEATURES

Each panel is built using laminated double sleepers, a plywood subfloor, picture frame construction, and anchored together using the quick pin connection line.

Our new patented athletic response ridge pad provides athletic benefits found in our most high profile permanent floor systems. This lineal pad offers maximum shock absorption with a low profile that is easy to install.



All Connor hardwood flooring products strictly adhere to MFMA (Maple Flooring Manufacturers Association) standards. The MFMA trademark is a guarantee of consistent quality, and sets the industry standards for uniform grading, dimensions and technical specifications. Connor takes quality control a step further by being the only MFMA member to have successfully earned the ISO 9001:2008 Certification. ISO certification is internationally recognized for establishing the standards for quality manufacturing and management. Connor Sport Court is committed to continuously improving the quality of its products, delivery time, and service levels in order to satisfy our customers' expectations as well as applicable regulatory requirements.

QUICKLOCK CLASSIC

CONNOR QUICKLOCK™ CLASSIC PORTABLE SYSTEM

The world's most trusted hardwood flooring system has established a legacy as the official court of the NCAA March Madness® and Final Four®, the Summer Olympic Games, the FIBA World Cup, 14 NCAA Conference Championships, plus dozens of NBA, and NCAA D1 teams nationwide.



- OPTIONAL ITEMS**
- PowerShock
 - Resilient Pad
 - Athletic Response Ridge Pad
 - Storage Carts
 - Transition Ramps
 - Heavy Duty ADA ramps



QUICKLOCK FUSION

CONNOR QUICKLOCK™ FUSION PORTABLE SYSTEMS PINLESS FLOOR

QuickLock Fusion is the newest innovation from Connor Sports making facility change over more simple and faster than ever before. This impressive new system is already making a big impact at the NCAA Final Four®, the Summer Olympic Games, the FIBA World Cup, and with NBA teams the Milwaukee Bucks, Golden State Warriors and the Brooklyn Nets.



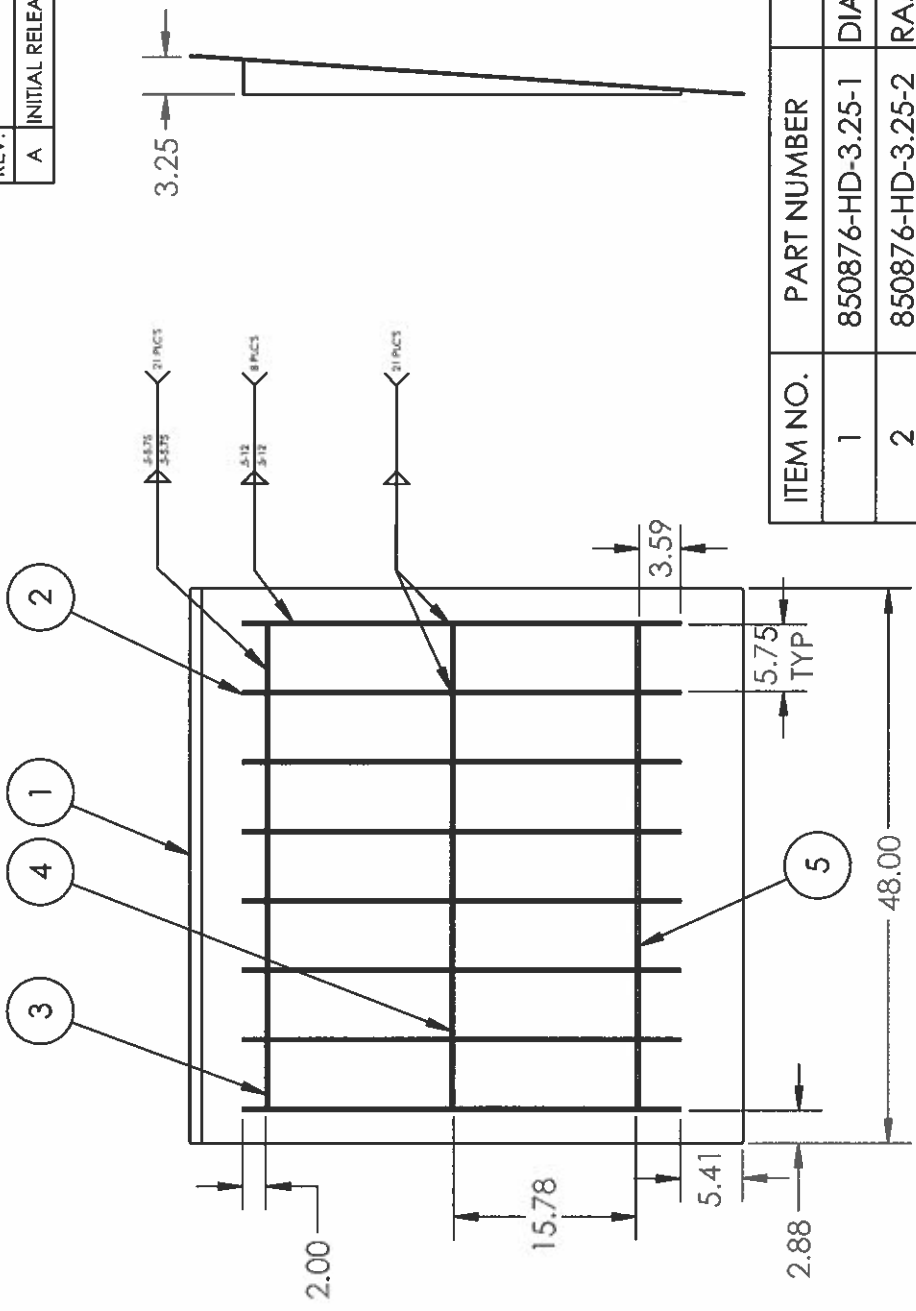
- OPTIONAL ITEMS**
- PowerShock
 - Resilient Pad
 - Athletic Response Ridge Pad
 - Storage Carts
 - Transition Ramps
 - Heavy Duty ADA ramps



ISO9001:2008
CERTIFIED

Zetow Inc.

REVISIONS		
REV.	DESCRIPTION	DATE
A	INITIAL RELEASE	10/9/2019



ITEM NO.	PART NUMBER	DESCRIPTION	QTY.
1	850876-HD-3.25-1	DIAMOND PLATE TOP 3.25 RISE	1
2	850876-HD-3.25-2	RAMP INCLINE	8
3	850876-HD-3.25-3	BRACE #1	7
4	850876-HD-3.25-4	BRACE #2	7
5	850876-HD-3.25-5	BRACE #3	7

NOTES:
1. POWDER COAT PAINT BLACK.

CONNOR SPORTS
251 INDUSTRIAL PARK RD.
AMASA, MI 49903
630-222-0928

INTERPRET GEOMETRIC
TOLERANCING PER:

UNLESS OTHERWISE SPECIFIED:
DIMENSIONS ARE IN INCHES
FRACTIONAL $\pm 1/16$
ANGULAR $\pm 1/2^\circ$ BEND $\pm 1^\circ$
ONE PLACE DECIMAL $\pm .05$
TWO PLACE DECIMAL $\pm .015$
THREE PLACE DECIMAL $\pm .005$

DATE
10/9/19

NAME
MTB

DRAWN
CHECKED
Q.A.

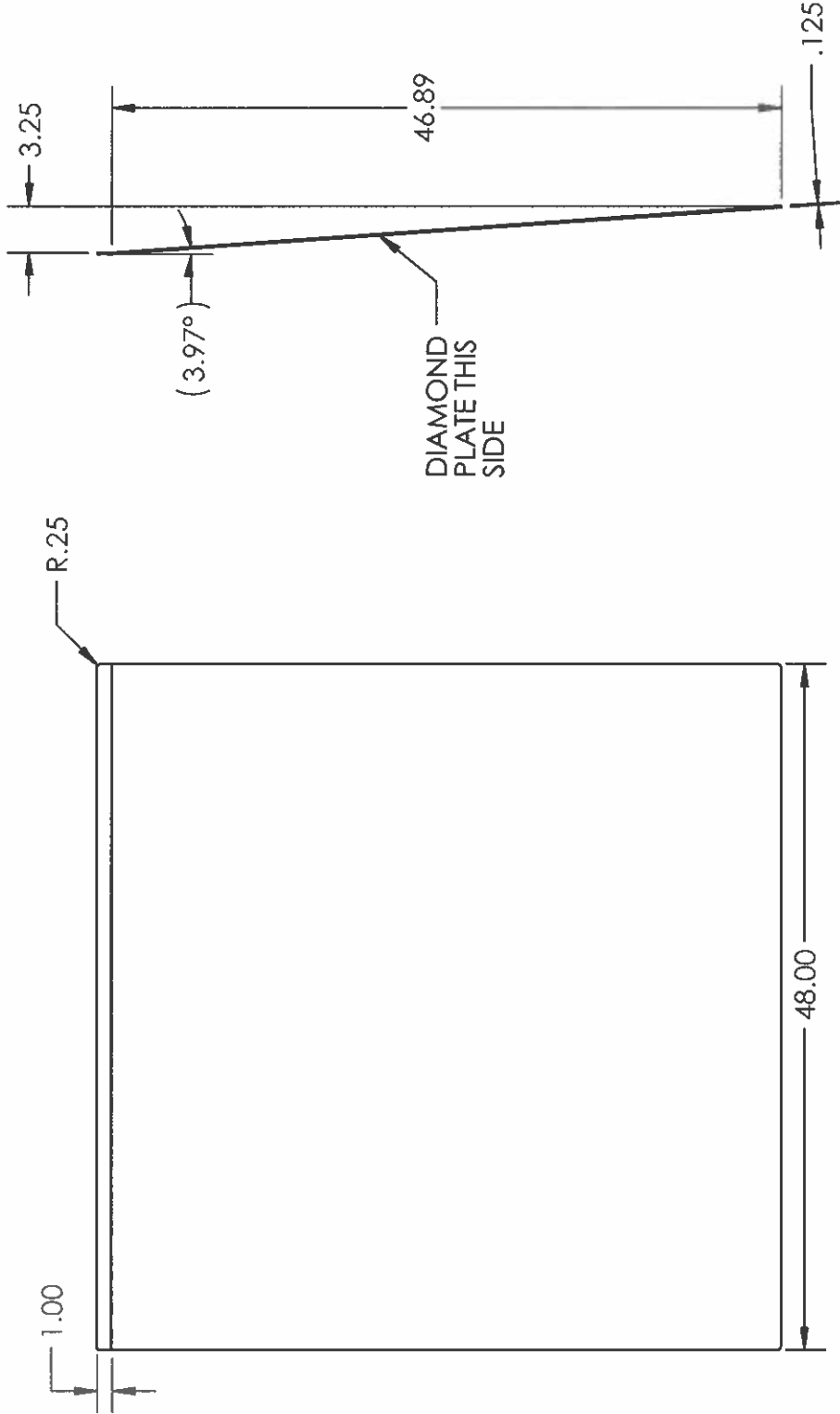
TITLE:
**HEAVY DUTY
RAMP, 3.25 RISE**

SIZE DWG. NO. REV
A 850876-HD-3.25 A

SCALE: 1:16 WEIGHT: SHEET 1 OF 3

PROPRIETARY AND CONFIDENTIAL
THE INFORMATION CONTAINED IN THIS
DRAWING IS THE SOLE PROPERTY OF
CONNOR SPORT COURT. ANY
REPRODUCTION IN PART OR AS A WHOLE
WITHOUT THE WRITTEN PERMISSION OF
CONNOR SPORT COURT IS PROHIBITED.

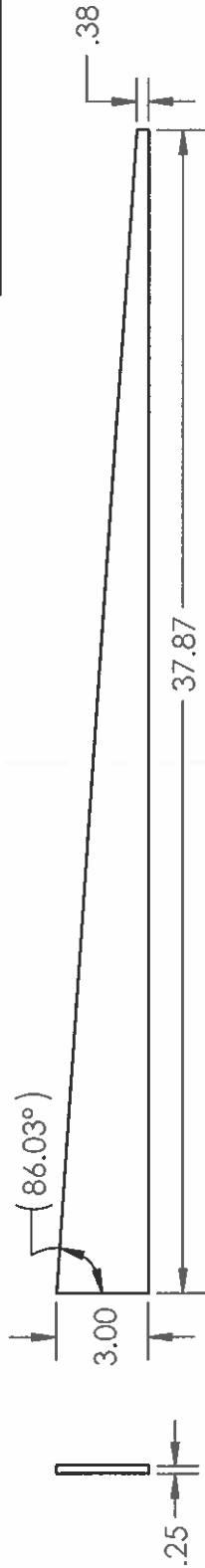
REVISIONS		
REV.	DESCRIPTION	DATE
-	See Sheet 1	-



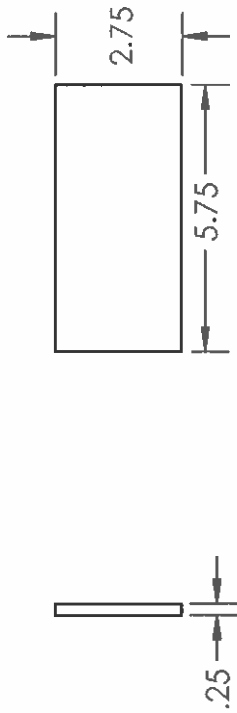
ITEM 1
MAKE OUT OF .125 THICK
STEEL DIAMOND PLATE

ID PLATE	CONNOR SPORTS 251 INDUSTRIAL PARK RD. AMASA, MI 49903 630-222-0928		DRAWN	MTB	10/9/19	TITLE: HEAVY DUTY RAMP, 3.25 RISE		
	INTERPRET GEOMETRIC TOLERANCING PER:		CHECKED			SIZE	DWG. NO.	REV
	MATERIAL		Q.A.			A 850876-HD-3.25 A		
	UNLESS OTHERWISE SPECIFIED: DIMENSIONS ARE IN INCHES FRACTIONAL $\pm 1/16$ ANGULAR: MACH $\pm 1/2^\circ$ BEND $\pm 1^\circ$ ONE PLACE DECIMAL $\pm .05$ TWO PLACE DECIMAL $\pm .015$ THREE PLACE DECIMAL $\pm .005$					SCALE: 1:16 WEIGHT: SHEET 2 OF 3		
	FINISH							
	DO NOT SCALE DRAWING							
PROPRIETARY AND CONFIDENTIAL THE INFORMATION CONTAINED IN THIS DRAWING IS THE SOLE PROPERTY OF CONNOR SPORT COURT. ANY REPRODUCTION IN PART OR AS A WHOLE WITHOUT THE WRITTEN PERMISSION OF CONNOR SPORT COURT IS PROHIBITED.								

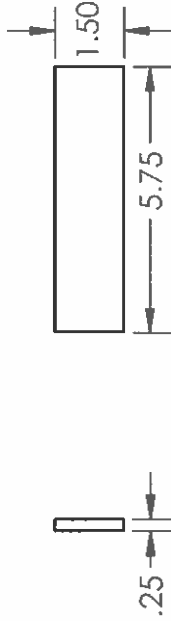
REVISIONS		
REV.	DESCRIPTION	DATE
-	See Sheet 1	-



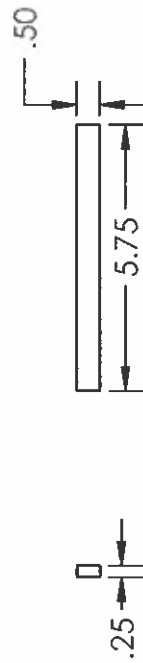
ITEM 2
MAKE OUT OF CRS BAR



ITEM 3
MAKE OUT OF CRS BAR



ITEM 4
MAKE OUT OF CRS BAR



ITEM 5
MAKE OUT OF CRS BAR

CONNOR SPORTS 251 INDUSTRIAL PARK RD. AMASA, MI 49903 630-222-0928		DRAWN	DATE	TITLE:	
INTERPRET GEOMETRIC TOLERANCING PER:		CHECKED	10/9/19	HEAVY DUTY RAMP, 3.25 RISE	
MATERIAL		Q.A.		SIZE	REV
FINISH				A	A
DO NOT SCALE DRAWING		UNLESS OTHERWISE SPECIFIED: DIMENSIONS ARE IN INCHES FRACTIONAL $\pm 1/16$ ANGULAR: MACH $\pm 1/2^\circ$ BEND $\pm 1^\circ$ ONE PLACE DECIMAL $\pm .05$ TWO PLACE DECIMAL $\pm .015$ THREE PLACE DECIMAL $\pm .005$		SCALE: 1:8	WEIGHT:
PROPRIETARY AND CONFIDENTIAL THE INFORMATION CONTAINED IN THIS DRAWING IS THE SOLE PROPERTY OF CONNOR SPORT COURT. ANY REPRODUCTION IN PART OR AS A WHOLE WITHOUT THE WRITTEN PERMISSION OF CONNOR SPORT COURT IS PROHIBITED.		DWG. NO. 850876-HD-3.25		SHEET 3 OF 3	